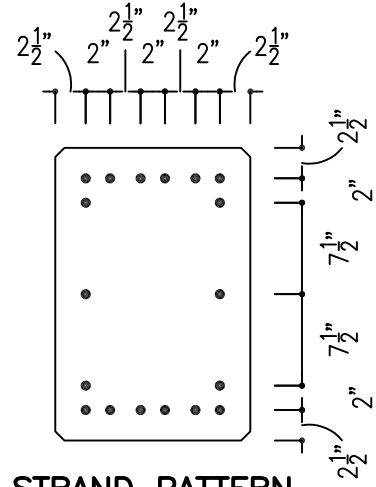
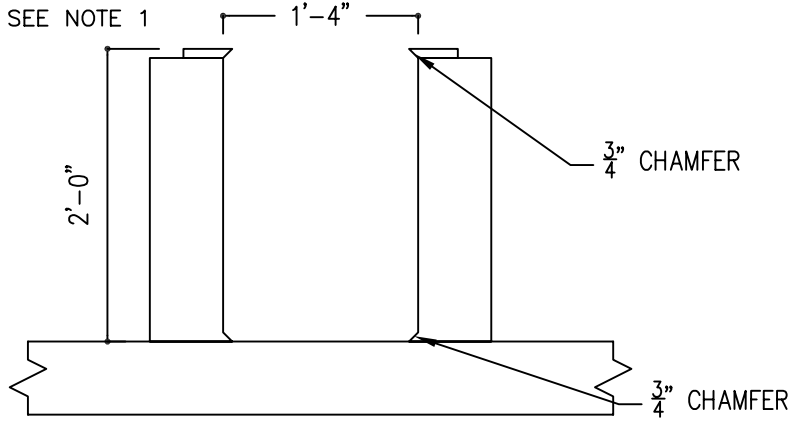


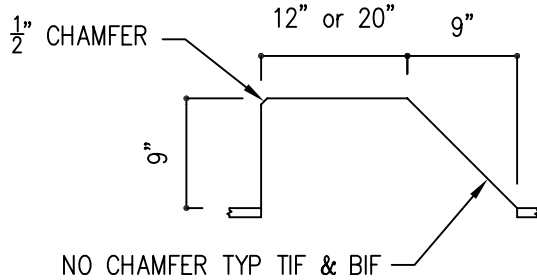
**DIMENSIONS FOR  
DETAILING**



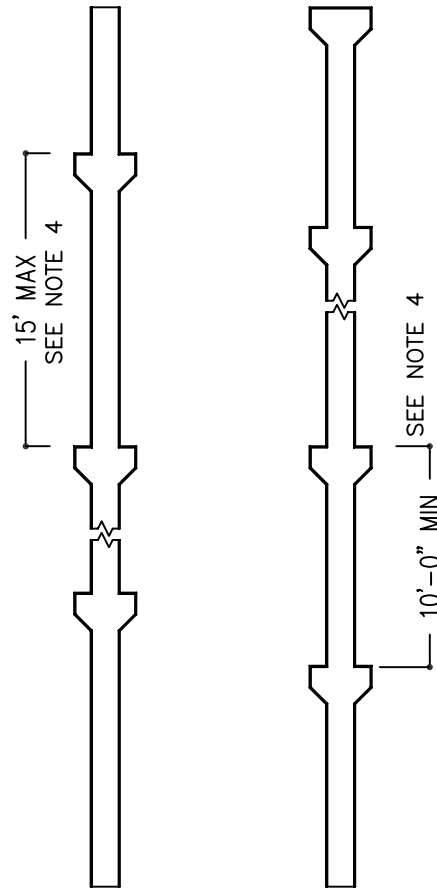
**STRAND PATTERN**

SEE NOTE 2

**TYPICAL CORBEL** SEE NOTE 5



**TYPICAL CORBEL LOCATIONS**



**SECTION PROPERTIES**

Area	384	in <sup>2</sup>
I <sub>x</sub>	18432	in <sup>4</sup>
I <sub>y</sub>	8192	in <sup>4</sup>
Y <sub>x</sub>	8	in
Y <sub>y</sub>	12	in
S <sub>x</sub>	1536	in <sup>3</sup>
S <sub>y</sub>	1024	in <sup>3</sup>
r <sub>x</sub>	6.93	in
r <sub>y</sub>	4.62	in
Vol./Surf.	4.8	
Weight (stone)	400	plf
volume	0.10	cy/lf

**NOTES**

- Movable sideforms Advance Notice (AN) req'd for sideform add-ons (4-6 wks)
- Other strand locations available
- Wooden blk'ts @ >10' corbel spacing
- Adjust for 20" corbel height &/or bulkheads
- (20) corbel fillers available (12" Ht.)

6	W1	6	1	8	2	0	2	4	3	0	3	6
16	AN											
18		Y										
20			Y									
24	Y	Y	Y	Y	Y	Y	Y	Y	Y	Y	Y	Y
30	AN	AN	AN	AN	AN	AN	AN	AN	AN	AN	AN	AN
36	AN	AN	AN	AN	AN	AN	AN	AN	AN	AN	AN	AN

ISSUED 1-06

16COL24

**55**

REVISED