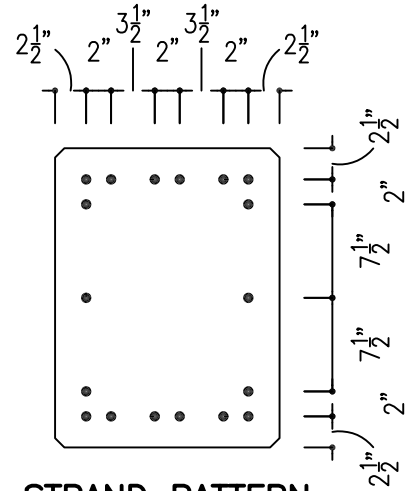
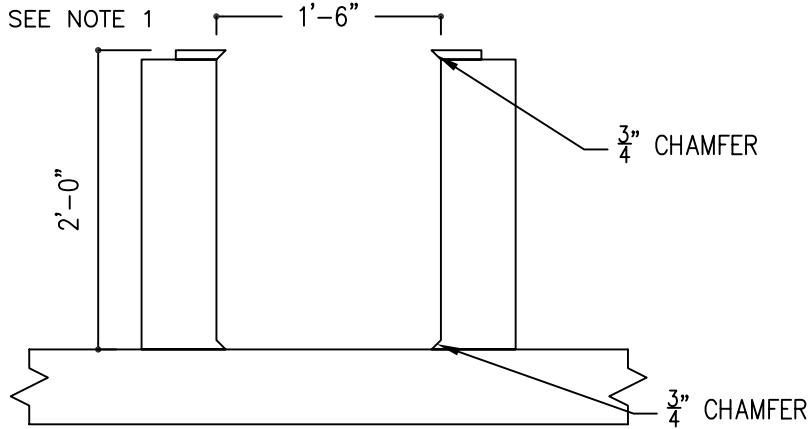


**DIMENSIONS FOR
DETAILING**

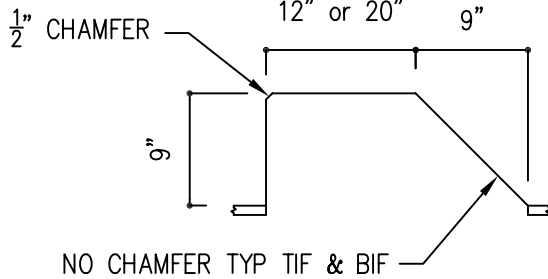


STRAND PATTERN

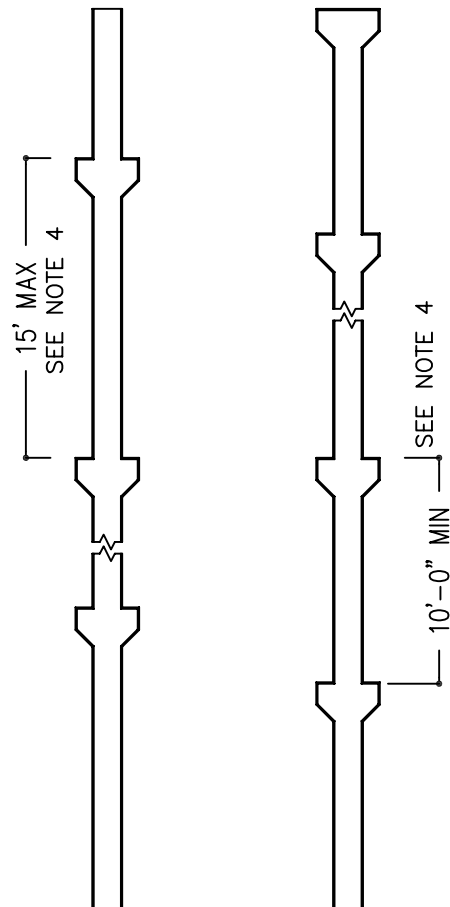
SEE NOTE 2

TYPICAL CORBEL

SEE NOTE 5



TYPICAL CORBEL LOCATIONS



SECTION PROPERTIES

Area	432	in ²
I _x	20736	in ⁴
I _y	11664	in ⁴
Y _x	9	in
Y _y	12	in
S _x	1728	in ³
S _y	1296	in ³
r _x	6.93	in
r _y	5.20	in
Vol./Surf.	5.1	
Weight (stone)	450	plf
volume	0.11	cy/lf

NOTES

16	18	20	24	30	36
AN					
	Y				
		Y			
Y	Y	Y	Y	Y	Y
AN	AN	AN	AN	AN	AN
AN	AN	AN	AN	AN	AN

- Movable sideforms Advance Notice (AN) req'd for sideform add-ons (4-6 wks)
- Other strand locations available
- Wooden blkt's @ >10' corbel spacing
- Adjust for 20" corbel height &/or bulkheads
- (20) corbel fillers available (12" Ht.)

ISSUED 01-06

18COL24

55

REVISED