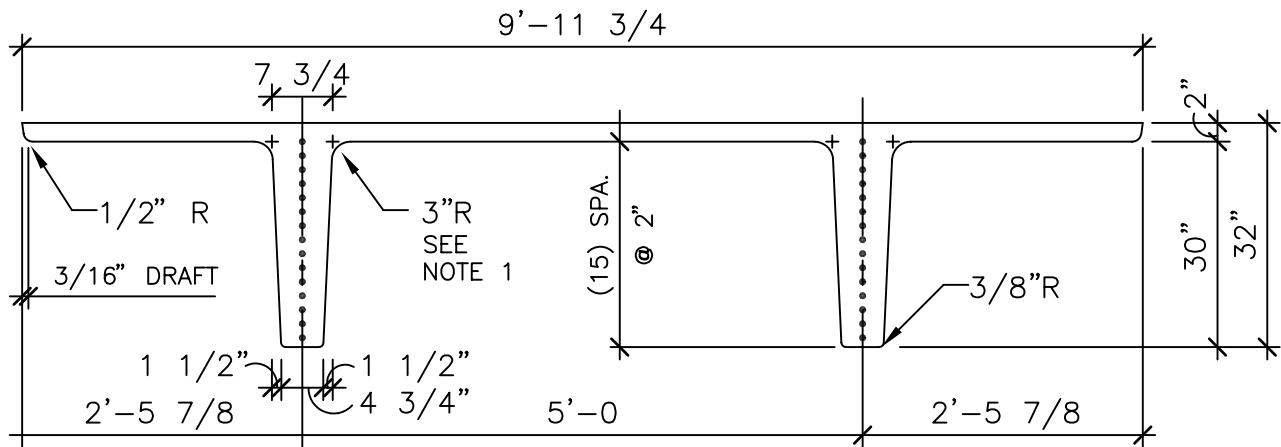


**DIMENSIONS FOR DETAILING**



**SECTION PROPERTIES**

Area	615 in <sup>2</sup>
I	59,720 in <sup>4</sup>
YB	21.98 in
YT	10.02 in
SB	2,717 in <sup>3</sup>
ST	5,960 in <sup>3</sup>
Vol./Surf.	1.72
Weight	psf plf
SLW (115 pcf)	49 491
Stone (150 pcf)	64 641
Volume	0.158 cy/lf

**SPECIAL NOTES**

1. Deck Blockouts must be located and sized so the blockouts do not interfere with the stem radii.

ISSUED 01-06

REVISED

10DT32

**DT4**

Page 1 of 2