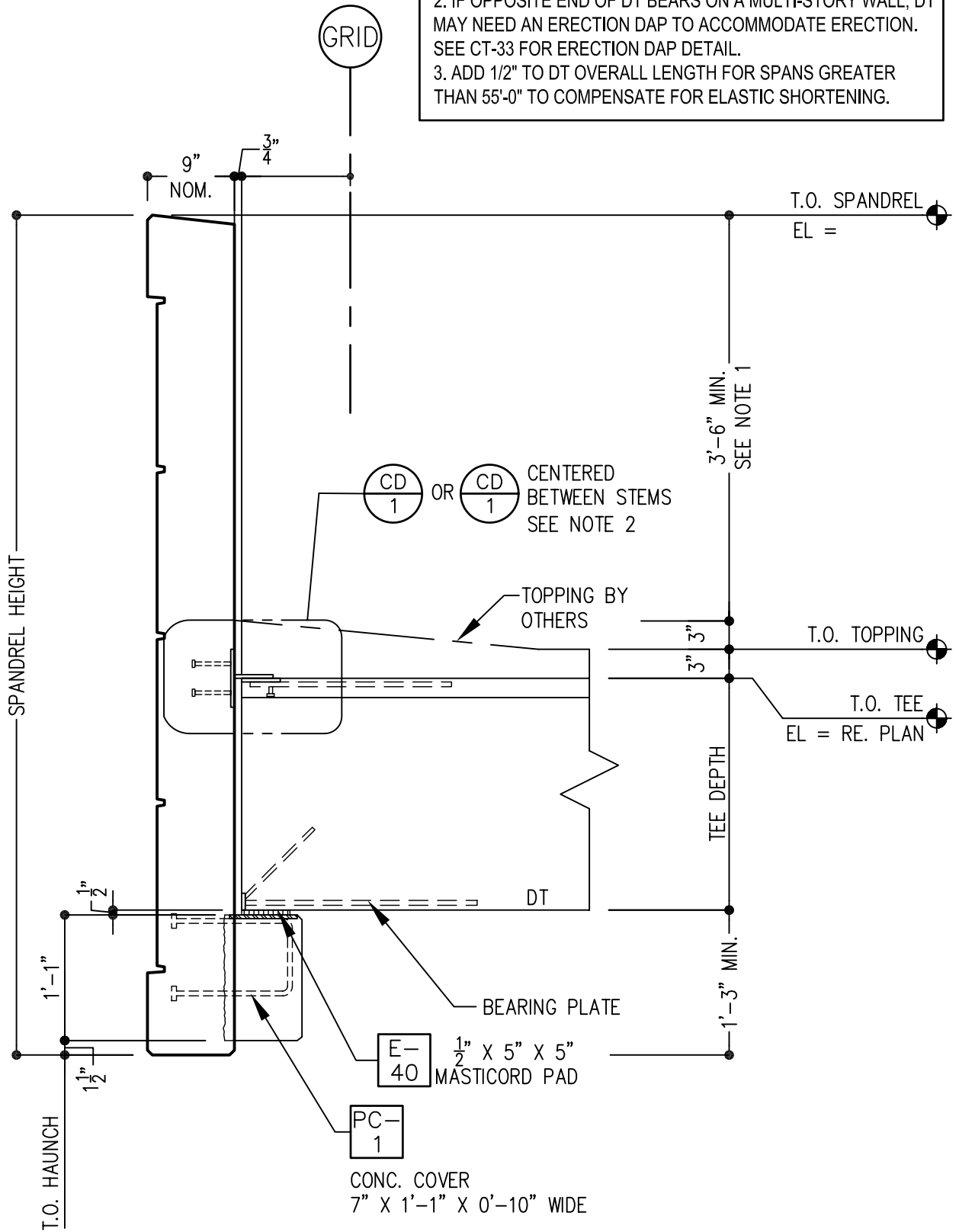


NOTES:
 1. IT IS CRITICAL TO CONSIDER CAMBER WHERE DT RUNS PARALLEL TO THE SPANDREL AT THE END OF THE STRUCTURE.
 2. IF OPPOSITE END OF DT BEARS ON A MULTI-STORY WALL, DT MAY NEED AN ERECTION DAP TO ACCOMMODATE ERECTION. SEE CT-33 FOR ERECTION DAP DETAIL.
 3. ADD 1/2" TO DT OVERALL LENGTH FOR SPANS GREATER THAN 55'-0" TO COMPENSATE FOR ELASTIC SHORTENING.



ISSUED	8-05
REVISED	

TYPICAL TEE BEARING
 @ SPANDREL CORBEL NO DAP

PD-10