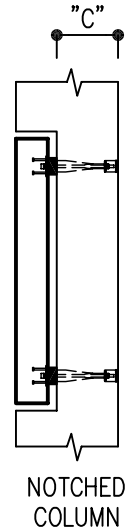
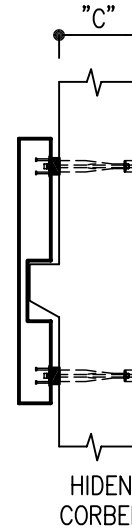
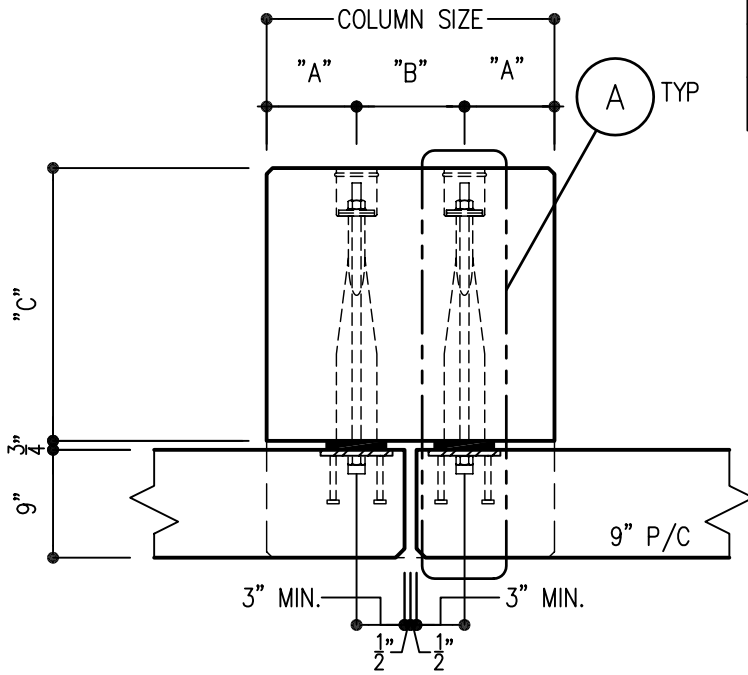
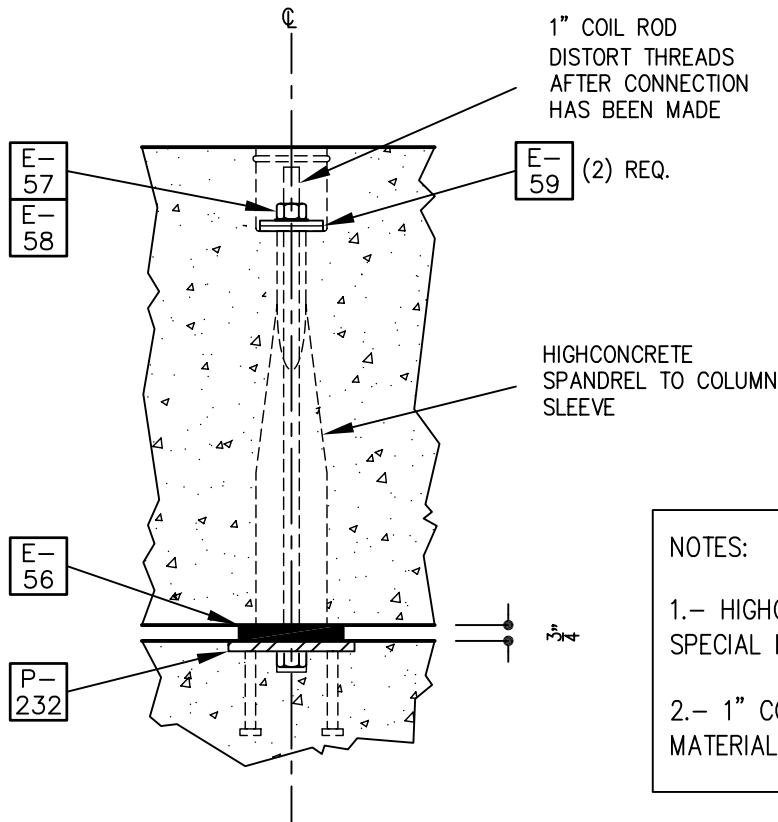


COLUMN SIZE	DIMENSION "A"	DIMENSION "B"	DIMENSION "C"
18"	5 $\frac{1}{2}$ "	7"	1'-6" MIN.
20"	6"	8"	1'-6" MIN.
24"	8"	8"	1'-6" MIN.



A



NOTES:

- 1.- HIGHCONCRETE SLEEVE MUST BE A SPECIAL INSERT (SZ-XX), SPECIFY LENGTH.
- 2.- 1" COIL ROD MUST BE SPECIAL ERECTION MATERIAL (SE-XX), SPECIFY LENGTH

ISSUED 8-05
 REVISED

COLUMN TO SPANDREL
 TIE BACK CONNECTION

PD-11